



Self-help
Self-responsibility
Equity
Equality
Democracy
Solidarity

Travel Plan Policy

First approved by Governors: Autumn 2021

Review Frequency: Every Three Years

Date of last review: July 2021

Date of next review: July 2024

Signed:

Ian Robert Broyd

Ian Broyd - Headteacher

O Bridge

Oliver Bridge - Chair of Governors



Osborne
Co-operative Academy Trust

Author	Date Created	Version	Notes
Kerry Girt	2021	1.0	

School Travel Plan Policy

Introduction

- In 1998, the Government introduced its White Paper on Transport, which emphasised the need to address the use of cars for the school journey. School Travel Plans are seen as a key component in addressing school journey issues.
- A School Travel Plan is a package of measures aimed at reducing the number of 'school runs' made. A series of different measures introduced by the school, through the plan, all contribute to reducing the congestion outside the school gates. Pupils, staff and parents are educated about and encouraged to walk and cycle to and from school instead, thus helping to increase pupils' independence, safety, health and fitness.

Our school travel plan

We actively encourage our pupils and staff to walk, scoot or cycle to school as these methods:

- keep us fit and healthy
- help our pupils develop road safety skills which will keep them safe as they travel further afield and more independently
- help keep our local air clean, and our streets free from congestion
- are life skills that everyone should be able to benefit from

What we do

- We use Modeshift STARS to update and monitor our school travel plan
- We promote safe and active travel as much as possible by using our noticeboard, displays, newsletter and website at www.warren.ps.co.uk
- We encourage all members of our school community to walk, cycle or travel by public transport for the journey to school. To support this we provide:
 - Cycle training (Bikeability)
 - Balance bike training for pre-school/Reception children
 - Pedestrian skills training
 - Promote Walk to school week
 - Participate in walking trips
 - Provide cycle parking
 - Provide scooter parking
 - Distribute public transport information if we are asked to by providers
 - Promote healthy lifestyles via newsletters
- Local school trips are made by public transport where possible, or on foot if the destination is close by
- We let all new pupils and their parents/carers know that we promote healthy and sustainable travel to school before the child starts at our school

What we ask of parents

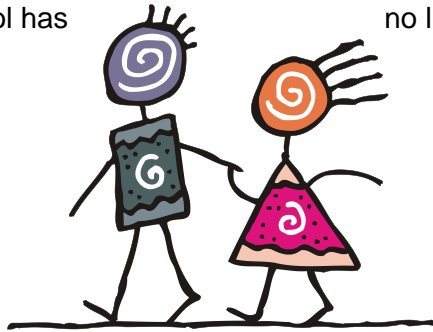
- Please encourage your child to walk, scoot or cycle to school whenever possible
- Ensure your child walks or rides sensibly and safely on the way to and from school, and to push bikes and scooters on school grounds
- Ensure that bicycles and scooters are roadworthy and properly maintained. If in doubt consult a qualified mechanic

- Consider providing your child with a cycle helmet
- Ensure your child can be seen by fitting lights to their bike by supplying them with high-visibility clothing
- Make sure your child has a lock for their bike or scooter and that they know how to use it
- Ensure you have appropriate insurance cover for your child's bicycle or scooter as the school is not liable for any loss or damage to cycles or scooters on the premises or whilst being used on the way to or from school
- If you travel by bus, can you get off the bus at least two stops early and walk the last part of the journey?

We understand that sometimes there is no alternative to driving to school.

- Where a car must be used we ask parents to drive only part of the way, and drop their child off away from the school so that some of the journey can be walked or scooted
- If you do have to drive your child and stop in the near vicinity please do so legally, safely and with respect for our neighbours and local residents
 - *It is not acceptable to park or wait on double yellow lines, on the school zigzags or across residential driveways for any period of time.*
 - *Please adhere to the child friendly road safety signs and absolutely no parking within the designated area.*

Please note that the decision on whether a child is competent to cycle or scoot to school is for the parent/carers to make. The school has no liability for any consequences arising from this decision.



What we ask of pupils

- Ask your parents if you can walk, scoot or cycle to school
- Behave in a way that shows you and the school in the best light whether walking, scooting, cycling or using public transport
- Partner up with your friends finding the safest route home
- Ride or walk courteously, sensibly and safely on the way to and from school
- Push bikes and scooters on school grounds
- Check that your bike or scooter is roadworthy and properly maintained
- Consider wearing a cycle helmet
- Make sure you can be seen by using lights in the dark or bad weather and by wearing high-visibility clothing
- Make sure you have a lock for your bike or scooter and that you use it